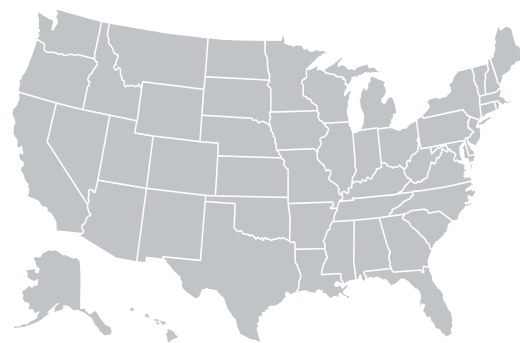


As communities across the country consider opening schools, many educational leaders find themselves tasked with protecting students and teachers from exposure to the virus. Without specific regulations mandating what they need to reopen safely, it is difficult to know where to start.

**In addition to working with local health officials, schools can refer to the considerations published by the CDC to help protect students, teachers, administrators, and staff to slow the spread of COVID-19.**

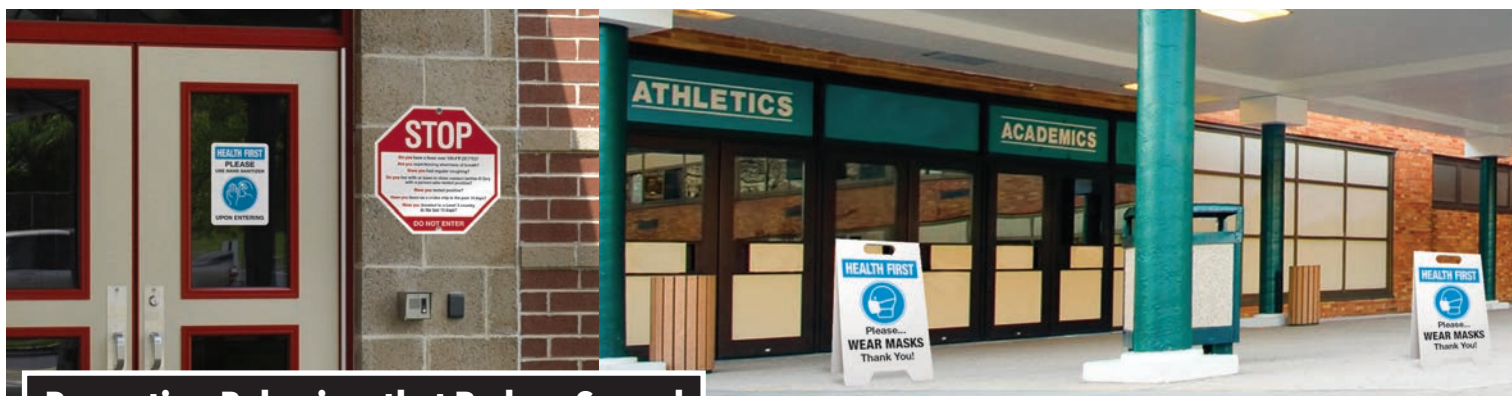


According to the CDC, the more people a student or staff member interacts with, and the longer the duration of the interaction, the higher the risk of COVID-19 spread. The risk of COVID-19 spread increases in school settings as follows:

**Lowest Risk:** Students and teachers engage in virtual-only classes, activities, and events.

**More Risk:** Small, in-person classes, activities, and events. Groups of students stay together and with the same teacher throughout/across school days and groups do not mix. Students remain at least 6 feet apart and do not share objects (e.g., hybrid virtual and in-person class structures, or staggered/rotated scheduling to accommodate smaller class sizes).

**Highest Risk:** Full sized, in-person classes, activities, and events. Students are not spaced apart, share classroom materials or supplies, and mix between classes and activities.



## Promoting Behaviors that Reduce Spread

Schools may consider implementing several strategies to **encourage behaviors that reduce the spread of COVID-19**. Personal prevention practices and environmental cleaning and disinfection are important principles recommended by the CDC. There are a number of actions school administrators can take to help lower the risk of COVID-19 exposure and spread during school sessions and activities.

## Staying Home when Appropriate

- ✓ **Educate staff and families** about when they/their child(ren) should stay home and when they can return to school.
- ✓ **Actively encourage employees and students** who are sick or who have recently had close contact with a person with COVID-19 to stay home. Develop policies that encourage sick employees and students to stay at home and ensure employees, students, and students' families are aware of these policies.

## Hand Hygiene and Respiratory Etiquette

- ✓ **Teach students and staff to properly wash their hands** with soap and water for at least 20 seconds and increase monitoring to ensure adherence among students and staff.
- ✓ If soap and water are not readily available, hand sanitizer that contains at least **60% alcohol** can be used (for staff and older children who can safely use hand sanitizer).
- ✓ **Encourage staff and students to cover coughs and sneezes** with a tissue. Used tissues should be thrown in the trash and hands washed immediately with soap and water for at least 20 seconds.

## Cloth Face Coverings

- ✓ **Teach the proper use of cloth face coverings.** Face coverings may be challenging for students to wear all day. Face coverings should be worn by staff and students as much as possible, and are most essential in times when physical distancing is difficult. Individuals should be frequently reminded not to touch their face covering and to wash their hands frequently. Information should be provided to staff, students, and students' families on proper use, removal, and washing of cloth face coverings.

**Note:** Cloth face coverings should not be placed on:

- ✓ Children younger than 2 years old
- ✓ Anyone who has trouble breathing or is unconscious
- ✓ Anyone who is incapacitated or otherwise unable to remove the cloth face covering without assistance

## Adequate Supplies

- ✓ Support healthy hygiene behaviors by **providing adequate supplies**, including **soap, hand sanitizer** with at least 60 percent alcohol, **paper towels, tissues, disinfectant wipes, cloth face coverings** (as feasible) and no-touch/foot-pedal trash cans.

## Signs and Messages

- ✓ **Post signs in highly visible locations** that promote everyday protective measures and describe how to stop the spread of germs, such as by properly washing hands and properly wearing a cloth face covering.
- ✓ Broadcast regular announcements on reducing the spread of COVID-19 on PA systems.
- ✓ Include messages about behaviors that prevent the spread of COVID-19 when communicating with staff and families.

## Recommended Visuals to Reinforce Your New Policies

- ✓ Post highly visible signage at school entrances reminding staff and students to stay home if they are feeling ill.
- ✓ Hang posters or wall decals in restrooms and by sinks with instructions on how to properly wash your hands to eliminate germs and reduce the spread of the virus.
- ✓ Install signage throughout the building reminding children and staff to cover their coughs and sneezes to avoid spreading germs.
- ✓ Post signs communicating any new policies requiring the use of face coverings in the building.





## Maintaining Healthy Environments

Schools may consider implementing several strategies to maintain healthy environments.

### Cleaning and Disinfection

- ✓ **Clean and disinfect frequently touched surfaces** such as playground equipment, door handles, sink handles, and drinking fountains between uses. Use of shared objects such as art supplies, toys, and games should be limited when possible, or cleaned between each use.
- ✓ If buses are used by the school, drivers should practice all safety actions and protocols as indicated for other school staff. **School buses and other transport vehicles should be cleaned and disinfected** based on CDC guidelines.
  - ✓ Institute measures to **physically separate or force distance greater than 6 feet between bus drivers and students**. These may include use of physical partitions or visual cues such as floor decals, colored tape, or signs to indicate to students where they should not sit or stand near the bus driver.
- ✓ Develop a schedule for **increased routine cleaning and disinfection**.
- ✓ **Ensure safe and correct use and storage of cleaning and disinfection products**, including storing products securely away from children. Use products that meet EPA disinfection criteria.
- ✓ **Cleaning products should not be used near children**, and staff should ensure that there is adequate ventilation when using these products to prevent children or themselves from inhaling toxic fumes.

### Shared Objects

- ✓ **Discourage sharing of items** between children that are difficult to clean or disinfect.
- ✓ **Keep each child's belongings separated** from others' and in individually labeled containers or cubbies.
- ✓ Ensure adequate supplies to **minimize the sharing of frequently touched materials** to the furthest extent possible. To achieve the lowest risk of spreading germs, each student should be assigned their own art and classroom supplies. If that is not possible, limit the use of supplies and equipment by one group of children at a time and clean and disinfect between uses.
- ✓ **Avoid sharing electronic devices, toys, books, and other games or learning aids**.

### Ventilation

- ✓ **Ensure ventilation systems operate properly and increase circulation of outdoor air** as much as possible by opening windows and doors, unless doing so poses a safety or health risk to children using the facility.

### Water Systems

- ✓ **Drinking fountains should be cleaned and sanitized**, but staff and students should be encouraged to bring their own water to minimize use and touching of water fountains.

### Modified Layouts

- ✓ **Space seating/desks at least 6 feet apart** when feasible.
- ✓ **Turn desks to face in the same direction or have students sit on only one side** of the tables, spaced apart from each other.

### Physical Barriers and Guides

- ✓ **Install physical barriers, such as sneeze guards and partitions**, at reception desks and other areas where it is difficult for individuals to remain at least 6 feet apart. Provide physical guides, such as tape on floors or sidewalks and signs on walls, to ensure that staff and children remain at least 6 feet apart in lines and at other times. If possible, create "one way routes" in hallways.

continued...

## Communal Spaces

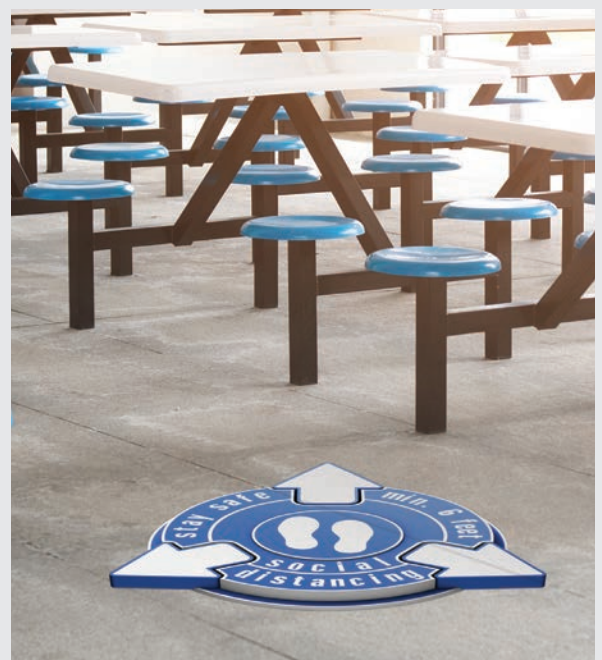
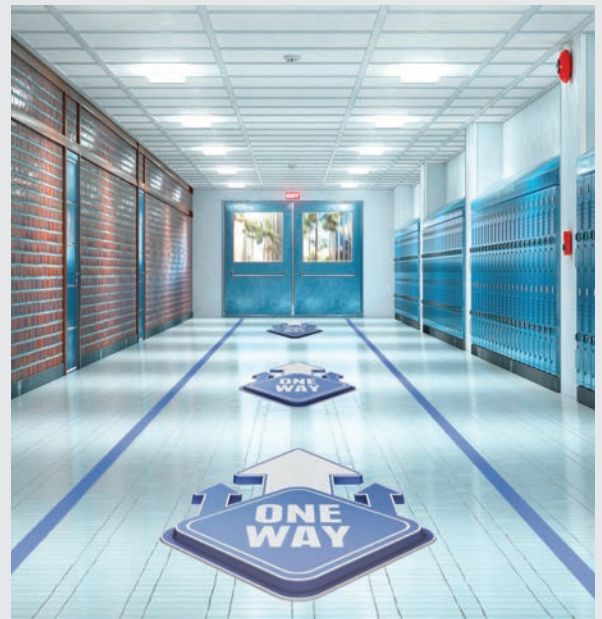
- ✓ **Close communal use shared spaces** such as cafeterias and playgrounds with shared playground equipment if possible; otherwise, stagger use and clean and disinfect between uses.
- ✓ **Add physical barriers**, such as plastic flexible screens, **between bathroom sinks** especially when they cannot be at least 6 feet apart.

## Food Service

- ✓ **Have children bring their own meals, or serve individually plated meals in classrooms** instead of in a cafeteria, while ensuring the safety of children with food allergies.
- ✓ **Use disposable food service items.** If disposable items are not feasible or desirable, ensure that all non-disposable food service items are handled with gloves and washed with dish soap and hot water or in a dishwasher. Individuals should wash their hands after removing their gloves or after directly handling used food service items.
- ✓ **If food is offered at any event, have pre-packaged boxes or bags for each attendee** instead of a buffet or family-style meal. Avoid sharing food and utensils and ensure the safety of children with food allergies.

## Recommended Visuals to Reinforce Your New Policies

- ✓ Use labels to indicate which surfaces have been recently cleaned and disinfected or are in need of sanitization.
- ✓ On buses, apply physical cues such as floor decals, colored tape or signs to indicate where riders should or should not sit or stand on the bus.
- ✓ Store cleaning products in a locked storage cabinet and apply signage to remind users to keep the cabinet locked at all times for student safety.
- ✓ Label personal storage containers and/or cubbies with students' names to avoid the sharing of items.
- ✓ Apply floor markers or colored tape to classroom floors to encourage students to stand a safe distance from one another. Identify safe walking routes in your classroom.
- ✓ Apply floor markers in hallways and on sidewalks to ensure that students and staff remain 6 feet apart while standing in line.
- ✓ Post signs on walls reminding students and staff to practice safe social distancing at all times.
- ✓ If an area of the building has been closed, post signage to notify students and staff so they avoid entering the room.
- ✓ Enforce reduced room occupancy by clearly posting the maximum number of occupants allowed in the space.
- ✓ Restrict access to every other restroom sink, stall and urinal with barricade tape or signage.
- ✓ Discourage students from sharing food by posting signs reminding them of safe practices.
- ✓ Post updated food service policies for staff and students to reduce the spread of germs.





## Maintaining Healthy Operations

Schools may consider implementing several strategies to maintain healthy operations.

### Protections for Staff and Children at Higher Risk for Severe Illness from COVID-19

- ✓ Offer options for students and staff at higher risk for severe illness that limit their exposure risk.

### Regulatory Awareness

- ✓ Be aware of local or state regulatory agency policies related to group gatherings to determine if events can be held.

### Gatherings, Visitors, and Field Trips

- ✓ Pursue virtual group events, gatherings, or meetings, if possible, and promote social distancing of at least 6 feet between people if events are held. Limit group size to the furthest extent possible.
- ✓ Limit any nonessential visitors, volunteers, and activities involving external groups or organizations.
- ✓ Pursue virtual activities and events in lieu of field trips, student assemblies, special performances, school-wide parent meetings, and spirit nights, as possible.
- ✓ Pursue options to convene sporting events and participation in sports activities in ways that minimizes the risk of transmission of COVID-19 to players, families, coaches, and communities.

### Identifying Small Groups and Keeping Them Together (Cohorting)

- ✓ Ensure that student and staff groupings are as static as possible by having the same group of children stay with the same staff. This practice should be followed all day for young children, and as much as possible for older children.
- ✓ Limit mixing between groups if possible.

### Staggered Scheduling

- ✓ Stagger arrival and drop-off times, designate locations by cohort or enact other protocols to limit contact between cohorts and direct contact with parents as much as possible.

### Designated COVID-19 Point of Contact

- ✓ Designate a staff person to be responsible for responding to COVID-19 concerns. All school staff and families should know who this person is and how to contact them.

### Communication Systems

- ✓ Put systems in place to report to the school if a staff member or student has symptoms of COVID-19, a positive test for COVID-19, or was exposed to someone with COVID-19 within the last 14 days in accordance with health information sharing regulations for COVID-19.
- ✓ Notify staff, families, and the public of school closures and any restrictions in place to limit COVID-19 exposure.

continued...

## Leave (Time Off) Policies and Excused Absence Policies

- ✓ **Implement flexible sick leave policies** and practices that enable staff to stay home when they are sick, have been exposed, or caring for someone who is sick.
- ✓ **Develop policies for return-to-school after COVID-19 illness.**

## Back-Up Staffing Plan

- ✓ Monitor absenteeism of students and employees, cross-train staff, and create a roster of trained back-up staff.

## Staff Training

- ✓ **Train staff on all safety protocols.**
- ✓ Conduct training virtually or ensure that social distancing is maintained during training.

## Recognize Signs and Symptoms

- ✓ If feasible, **conduct daily health checks** including temperature screening and/or or symptom checking of staff and students.

## Sharing Facilities

- ✓ Encourage any organizations that share or use the school facilities to also follow these considerations.

## Recommended Visuals to Reinforce Your New Policies

- ✓ Post signage communicating your updated visitor policy at all building entrances.
- ✓ Post outdoor signage at sporting fields with new game rules. These may include face covering and social distancing requirements.
- ✓ Using outdoor signage, clearly mark assigned pick up and drop off locations in the parking lot. Apply pavement markers to identify safe pathways into the school.
- ✓ If school hours have changed, post the new hours at all building entrances as well as pick up and drop off locations.
- ✓ Post new policy reminders in staff break rooms to help enforce.
- ✓ If introducing daily temperature checks, identify temperature screening stations with signage.



Convenient kits include everything you need to make specific areas of your school safe for students, staff, and visitors

## COVID-19 Signage Kits for Schools

Every area of your school requires a different approach to social distancing, and Emedco has all of the innovative products you need in one place. Our exclusive signage kits are packed with various safety solutions to establish physical distancing standards in your restrooms, auditorium, hallways, and other places where high foot traffic and regular congregations can be expected.

### 3D Social Distancing Label Kit for Outdoors

Kit includes:

- 10 "Line Up Here" outdoor 3D floor markers (24"H x 14.5"W)
- 2 "Practice Social Distancing" outdoor 3D floor markers (24"H x 22"W)



23280D



23273D



23287D

### 3D Social Distancing Label Kit for Cafeterias

Kit includes:

- 1 "Stand 6 Feet Apart" 3D wall decal (24"H x 16.6"W)
- 1 "Maximum Occupancy" 3D wall decal (24"H x 16.6"W)
- 10 "Practice Social Distancing" 3D floor markers (24"H x 22"W)
- 10 "Stop Please Wait Here" 3D floor markers (24"H x 22.3"W)
- 2 rolls of floor marking tape (2"W x 108"L)



23278D



23271D



23285D

### 3D Social Distancing Label Kit for Classrooms

Kit includes:

- 1 "Wash for 20 Seconds" 3D floor marker (24"H x 16.4"W)
- 1 "Wash Your Hands" 3D wall decal (23.4"H x 24"W)
- 1 "Practice Social Distancing" 3D floor marker (24"H x 22"W)
- 1 "Stand 6 Feet Apart" 3D wall decal (24"H x 16.6"W)
- 1 "Maximum Occupancy" 3D wall decal (24"H x 16.6"W)
- 2 packs of 4" standard vinyl numbers 0 - 9
- 2 rolls of floor marking tape (2"W x 108"L)



23281D



23274D



23288D

continued...

Find even more safety and health protection products at [emedco.com](http://emedco.com)

### 3D Social Distancing Label Kit for Auditoriums

Kit includes:

- 10 "Practice Social Distancing" 3D floor markers (24"H x 22"W)
- 1 "Maximum Occupancy" 3D wall decal (24"H x 16.6"W)
- 2 packs of 4" standard vinyl numbers 0 - 9, and 2 rolls of floor marking tape (2"W x 108"L).



23279D



23272D



23286D

### 3D Social Distancing Label Kit for Hallways

Kit includes:

- 2 "One Way" 3D floor markers (24"H x 14.3"W)
- 2 "Line Up Here" 3D floor markers (24"H x 14.5"W)
- 1 roll of floor marking tape (2"W x 108"L).



23283D



23276D



23290D

### 3D Social Distancing Label Kit for Foyers

Kit includes:

- 1 "Practice Social Distancing" 3D floor marker (24"H x 22"W)
- 1 "Prevent the Spread of Germs" 3D floor marker (24"H x 18.7"W)
- 1 roll of floor marking tape (2"W x 108"L)



23282D



23275D



23289D

### 3D Social Distancing Label Kit for Bathrooms

Kit includes:

- 3 "Wash for 20 Seconds" 3D floor markers (24"H x 16.4"W)
- 3 "Wash Your Hands" 3D wall decals (23.4"H x 24"W)
- 1 "Stand 6 Feet Apart" 3D wall decal (24"H x 16.6"W)
- 1 "Maximum Occupancy" 3D wall decal (24"H x 16.6"W)
- 2 packs of 4" standard vinyl numbers 0 - 9



23277D



23270D



23284D

continued...

Find even more safety and health protection products at [emedco.com](http://emedco.com)



## Social Distancing and Hygiene Signage Kit for Bathrooms

Kit includes:

- 3 7" H x 5" W laminated vinyl "CDC Hand Washing Guidelines" labels
- 1 10" x 14" plastic "Health First Social Distancing" sign
- 1 10" x 14" plastic "Maximum Occupancy" sign



23291D

## Social Distancing Signage Kit for Cafeterias

Kit includes:

- 1 10" x 14" plastic "Health First Social Distancing" sign
- 1 10" x 14" plastic "Maximum Occupancy" sign
- 2 rolls 2" W x 180' L floor marking tape
- 5 17" "Keep Space Leave Safe" floor markers with removable adhesive
- 5 17" "Please Wait Here" floor markers with anti-slip overlay permanent adhesive



23292D

## Social Distancing Signage Kit for Auditorium Assembly

Kit includes:

- 1 10" x 14" plastic "Maximum Occupancy" sign
- 2 rolls of 2" W x 180' L floor marking tape
- 5 17" "Keep Space Leave Safe" floor markers with removable adhesive



23293D

## Social Distancing Signage Kit for School Classroom

Kit includes:

- 1 "Keep Space Leave Safe" 17" floor marker with removable adhesive
- 1 10" x 14" plastic "Health First Social Distancing" sign
- 1 10" x 14" plastic "Maximum Occupancy" sign
- 2 rolls of 2" W x 180' L floor marking tape



23294D

## Social Distancing and Hygiene Signage Kit for Foyers

Kit includes:

- 1 17" "Keep Space Leave Safe" floor marker with removable adhesive
- 1 10" x 14" plastic "Caution Social Distancing" sign
- 1 roll of 2" W x 180' L floor marking tape



23295D

## Social Distancing Signage Kit for Hallways

Kit includes:

- 1 roll of 2" W x 180' L floor marking tape
- 1 pack of 100 3" x 8" floor marking arrows.



23296D

Post safety reminders and hazard warnings throughout your facility to keep employees and visitors safe

Signs

• Available in 7" h x 10" w, 10" h x 14" w & 14" h x 20" w sizes.



22526D



22528D



22530D



22532D



22533D



22531D



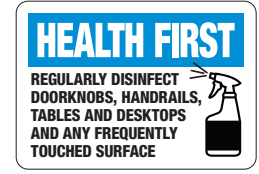
L13766



L13798



Sign No. L13801



L13914



L13897



L13913



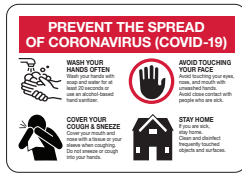
22539D



22538D



L13771



L13767



L13800



L13775



L13813



L13845



L13920



L13922



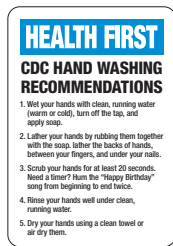
L13915



L13908



L13848



22534D



22535D



L13836



L13851



L13850



L13900



L13847



L13822



L13769



22529D



L13805



L13906



L13901

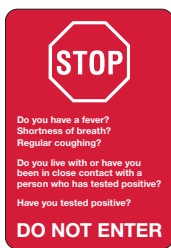
All signs and labels available with **Duroshield Topcoat** for a lifetime of protection.

Find even more safety and health protection products at [emedco.com](http://emedco.com)

continued...



L13765



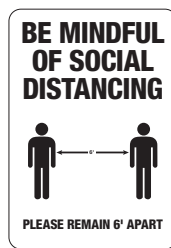
L13853



L13763



L13764



L13759



2254088



L13902



L13903

All signs and labels available with **Duroshield Topcoat** for a lifetime of protection.

## Labels

• Available in 3-1/2"x 5" & 5"x 7" sizes unless noted under illustration.



L13751



L13745



L13746



L13749



L13750



L13747



22666D (S)  
22681DVADSTD57D (D)



22659D (S)  
22676DVADSTD57D (D)



22668D (S)  
22683DVADSTD57D (D)



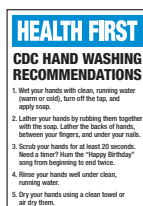
L13753



L13752



L13754



22656D



22657D



L13892



L13893



L13895



22660D



L13887 (S)  
23126D (D)



L13883



L13884



L13864 (S)  
23122D (D)



L13886



22663D (S)  
22679DVADSTD57D (D)



22670D  
22685DVADSTD57D (D)



22672D (S)  
22687DVADSTD57D (D)



L13886



L13886



L13886

All signs and labels available with **Duroshield Topcoat** for a lifetime of protection.

continued...

Find even more safety and health protection products at [emedco.com](http://emedco.com)

## Posters

- 24" h x 18" w or 22" h x 17" w (size listed under each poster)
- Zoom-In at [seton.com](http://seton.com) to see full legend.



22542D (24" h x 18" w)



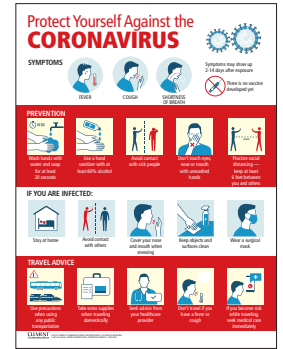
22590D (22" h x 17" w)



22546D (22" h x 17" w)



22547D (22" h x 17" w)



22545D (22" h x 17" w)

## Portable Floor Stands

- Double-sided so your message is impossible to miss
- Available in 2 sizes: 12" w x 20" h & 15" w x 32" h



22947D (20" h x 12" w)  
22948D (32" h x 16" w)



22949D (20" h x 12" w)  
22950D (32" h x 16" w)



22951D (20" h x 12" w)  
22952D (32" h x 16" w)



22955D (20" h x 12" w)  
22956D (32" h x 16" w)



22957D (20" h x 12" w)  
22958D (32" h x 16" w)



22959D (20" h x 12" w)  
22960D (32" h x 16" w)

## Pole Banners

- Works great in aisle ways, traffic areas, entrances, and exits
- Projects 28" from wall
- 16-1/2" w x 27" h



23002D



23001D

continued...

Find even more safety and health protection products at [emedco.com](http://emedco.com)

## Giant Wall Signs

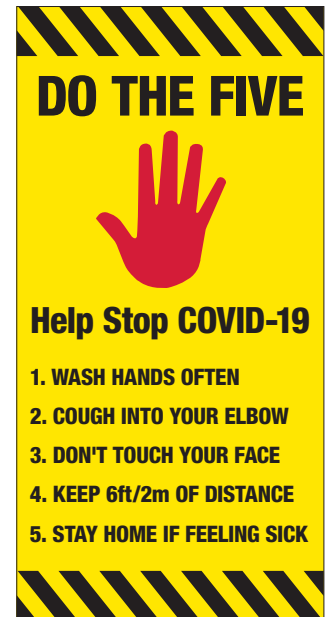
- Remind employees and visitors alike to practice social distancing while they are inside your facility
- Can be used as either wall signs or as floor markers



22992D (48"h x 24"w)



22993D (48"h x 24"w)



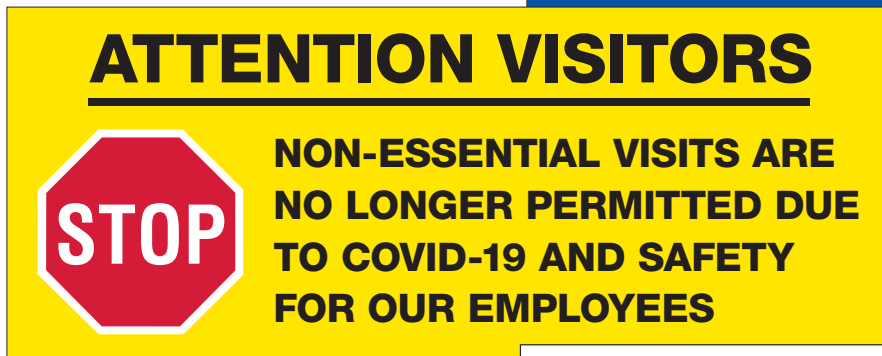
22994D (48"h x 24"w)

## Giant Banners

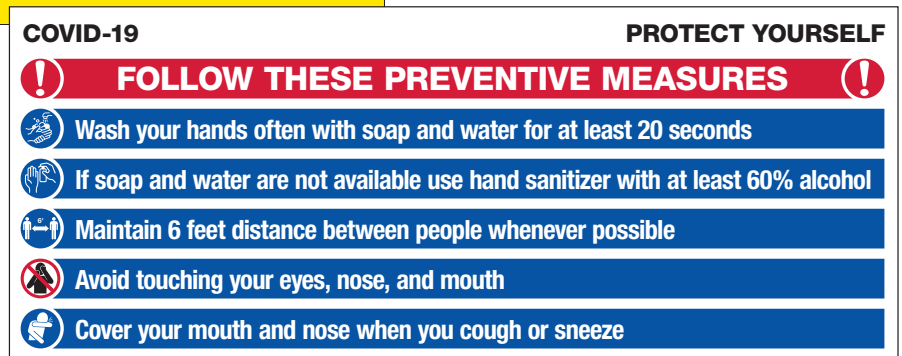
- Show your policies from a far
- Available in 2 sizes: 3'h x 5'w & 4'h x 10'w



22995D (3'h x 5'w)  
22996D (4'h x 10'w)



22998D (3'h x 5'w)  
22999D (4'h x 10'w)



22783D (3'h x 5'w)  
22784D (4'h x 10'w)

## Floor Markers

- Vinyl with Anti-Slip Overlay • Available in 17" Dia., 24" Dia. / Rectangular shapes are 18"h x 24"w



## Temporary Floor Markers

- TexWalk® material leaves behind little to no residue when removed
- Adheres to flat surfaces like wood, tile, metal, and carpet for up to 3 months.
- Available in 17" Dia., 24" Dia. / Rectangular shapes are 18"h x 24"w



## Floor Marking Strips

- 4"h x 30"w Vinyl with Anti-Slip Overlay





## Drinking Fountain Lockout

- The drinking fountain lockout device is an innovative solution to restrict drinking fountain use in schools as a measure to prevent the spread of COVID-19.
- This new device provides an easy-to-install bright red physical barrier made of tamper-resistant polypropylene that will completely cover the fountain spout and lock in place.
- Once installed, simply secure with a padlock.
- While the device will prevent water fountain usage, it won't prevent water flow to a bottle-filling station that might also be connected to the water fountain so staff and students can remain hydrated.
- Our drinking fountain lockouts are sold individually or as kits with the padlocks included.



### Available in 4 convenient product options:



PLG30 - Lockout Device Only



23299D - 3 Lockouts & 3 Padlocks



23298D - Lockout & Padlock



23300D - 6 Lockouts & 6 Padlocks