

# Seal Selection Guide

## Secure your property, equipment and inventory

We have a variety of seals for any application. Call today to learn more about our full selection. Shown below are just a few of the types of seals we offer:



### Plastic Lock Seals

Ideal for securely sealing tankers, containers, truck doors and more

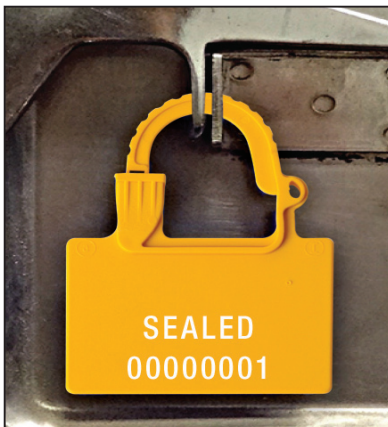
- Durable polypropylene blushes to reveal tampering when bent and has a 35-lb. tensile strength
- Resist heat and cold
- Easy to use – just slide pointed end into capped end
- Embossed with the word “SEALED” and 7-digit consecutive numbering for added security
- Measure 3/8" w x 7-1/2" l and available in 5 colors
- Customize by adding your wording, company name or other information for enhanced security



### Light-Duty Pull Snug Seals

Economical seal that can be easily removed when needed

- Seals can be easily removed without tools
- Feature 3/4" h x 1" w tab with text “SEALED DO NOT REMOVE”
- Embossed text is the same color as the seal. The opposite side of the tag is blank for you to write a message in pen, pencil or permanent marker
- Seals are made of weatherproof polypropylene and available in 6 fade-resistant colors
- 8 to 12 lb. tensile strength
- Custom seals are heat stamped with up to 3 lines of your wording and up to 7 digits of consecutive numbering



### One-Piece Padlock Seals

Specifically designed to detect tampering

- High grade polypropylene seals are heat stamped SEALED and consecutively numbered
- User-friendly single-handed application and removal
- Available in standard 4/5" h x 1-4/5" w and extended 1-1/5" h x 1-4/5" w tab
- Choose from seven standard colors
- Customize with logos, company name, and variable numbering



## Plastic Padlock Seals

Secure and tag equipment such as meters, drums, valves and more

- Best for meters, drums, valves or more
- Strong hasp with plastic body must be cut off to be removed
- Resist weather and rust for use indoors or out
- Available in two styles: Standard seal with the word "SEALED" and consecutive numbering has a 100 lb. tensile strength; Write-On seal features a white write-on area, consecutive numbering and a 140 lb. tensile strength
- Also available to be customized with your company name or special wording along with 7-digit consecutive numbering



## Metal Ball Seals

Unique ball housing has double-locking rings that permanently engage to create a tamper-proof seal

- Ideal for ocean containers, sprinkler systems, tractor trailers and more
- Durable, tin-plate steel is thin to fit in narrow slots and can be easily applied without tools
- Embossed with "DO NOT REMOVE" or "SEALED" and consecutive numbering
- Measure 3/8"h x 8-1/2"l and come with either a blue or silver ball
- Customize with your wording and numbering, choose from colored ball or colored band and ball



## Steel Cable Seals

Thin, braided-steel cable easily fits into awkward sealing points to create a super strong seal

- Ideal for in-plant or truck valves, food, chemicals, duty-free airline carts and hazmat containers
- Cable is 1/16" or 1/8" in diameter and 11-1/2" long with a 900 lb. or 2,892 lb. tensile strength for high security
- Must be removed with cable cutters
- Feature the word "SEALED" with consecutive numbers
- The 1/8" size complies with C-TPAT standards
- Customize with your company name and numbering



## Steel Bolt Locks

Exceeds ISO 17712 requirements for shipping containers

- Complies with C-TPAT standards for use on ISO containers, high-value shipments, intermodal containers, rail cars, hatches, hazmat containers and more
- Unique high security seal combines both barrier and indicative seal features
- Constructed with 5/16" diameter shank and 3" long, with a tensile strength of 10,000 lbs
- Steel bolt and lock body are zinc plated for corrosion resistance with an ABS high-impact plastic body cover that clearly indicated tampering
- Available only in white as specified by US Customs. Laser engraved with the word "SEAL" and consecutively numbered
- Customize with laser engraved wording and your choice of four colors